



TrichoScan

.....making hair growth measurable

TrichoScan-Instructions

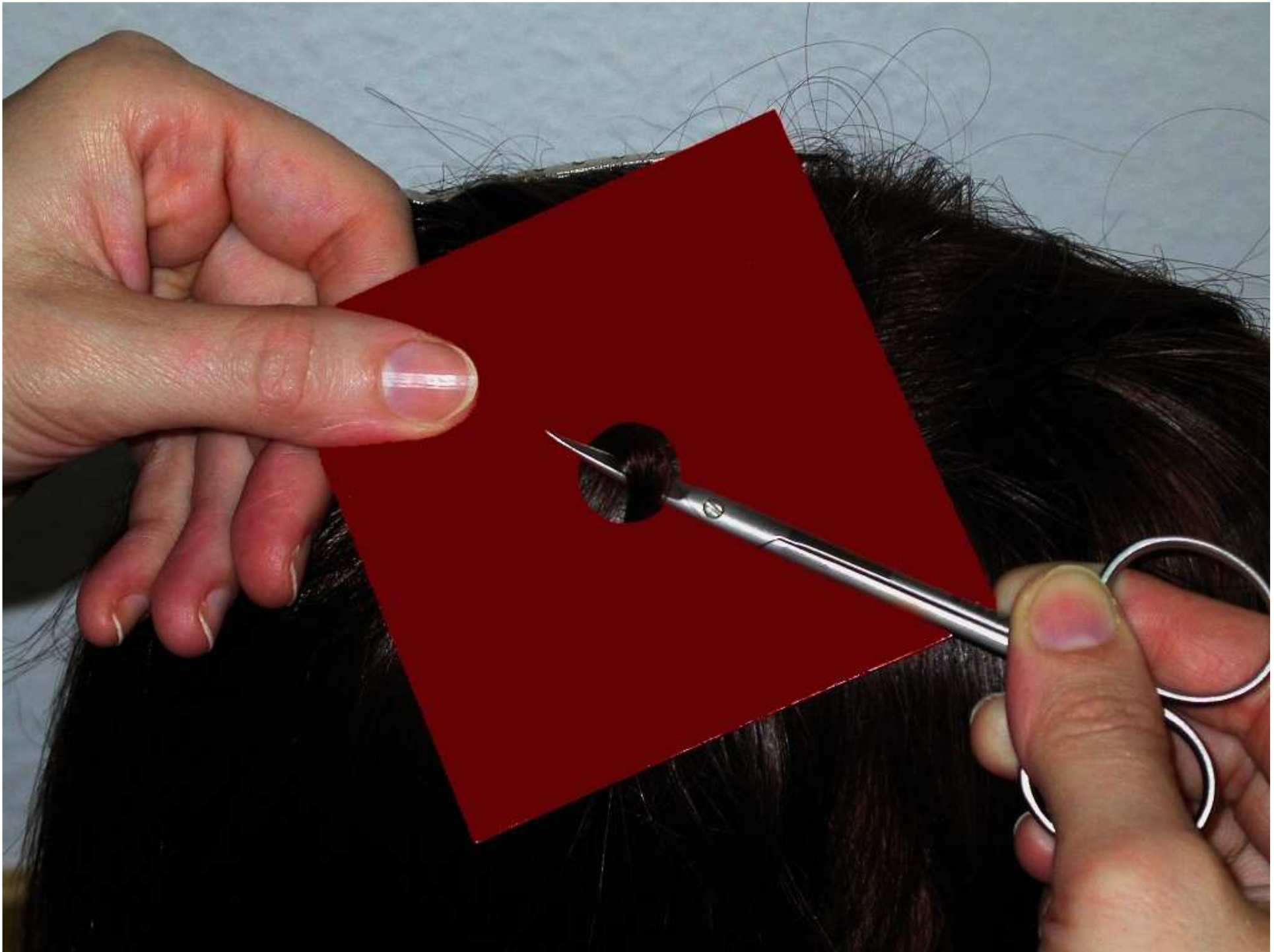
Select the correct clipping site according to study protocol or the suitable clipping site according to our manual at our website.

Clip at least the area of the template.

The use of the template is not mandatory but might be helpful for beginners.



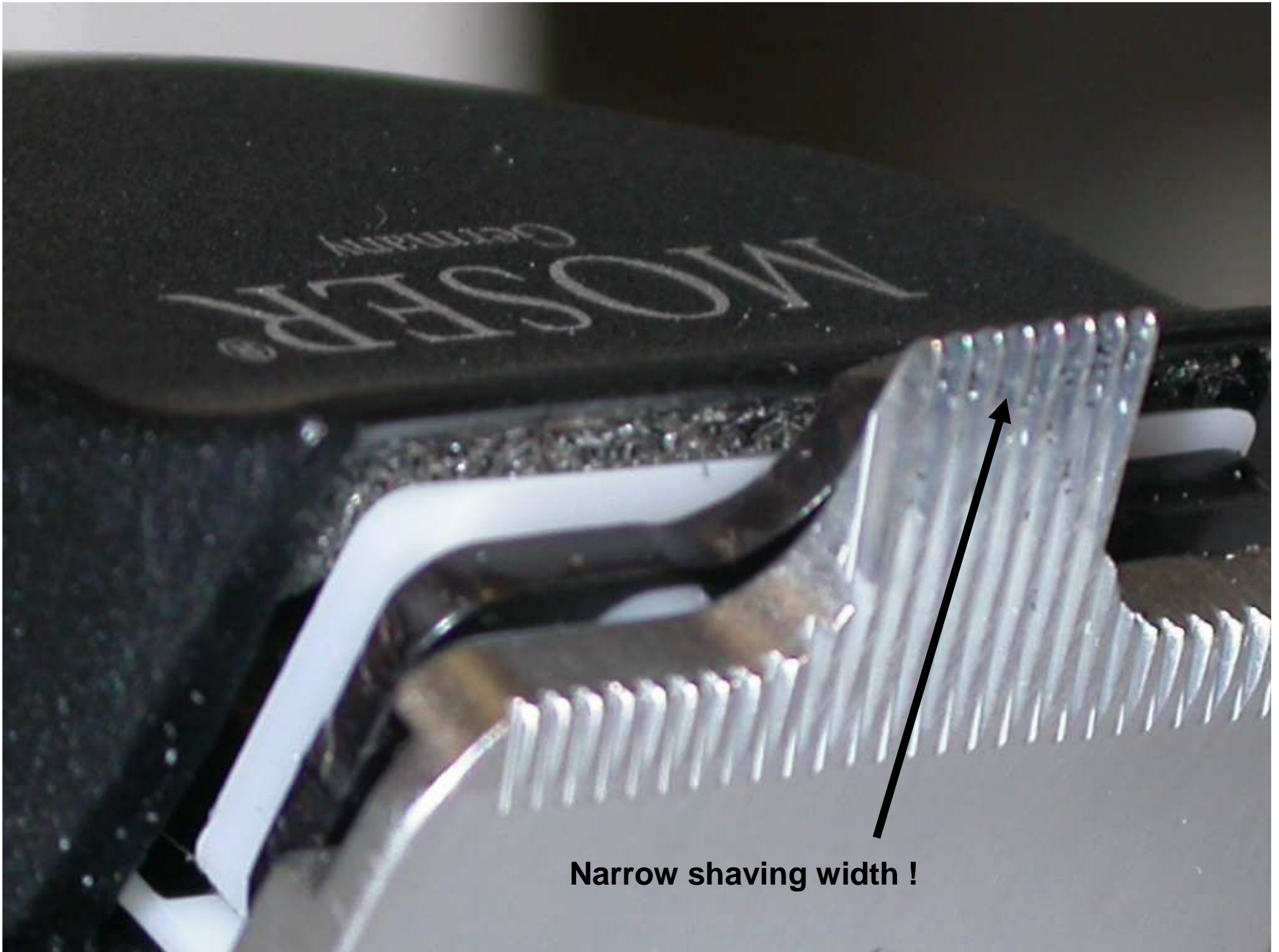
When you use the template,
you may clip the hair with a pair of
scissors.



Please use our
MOSER-TrichoScan Edition
hair clipper.

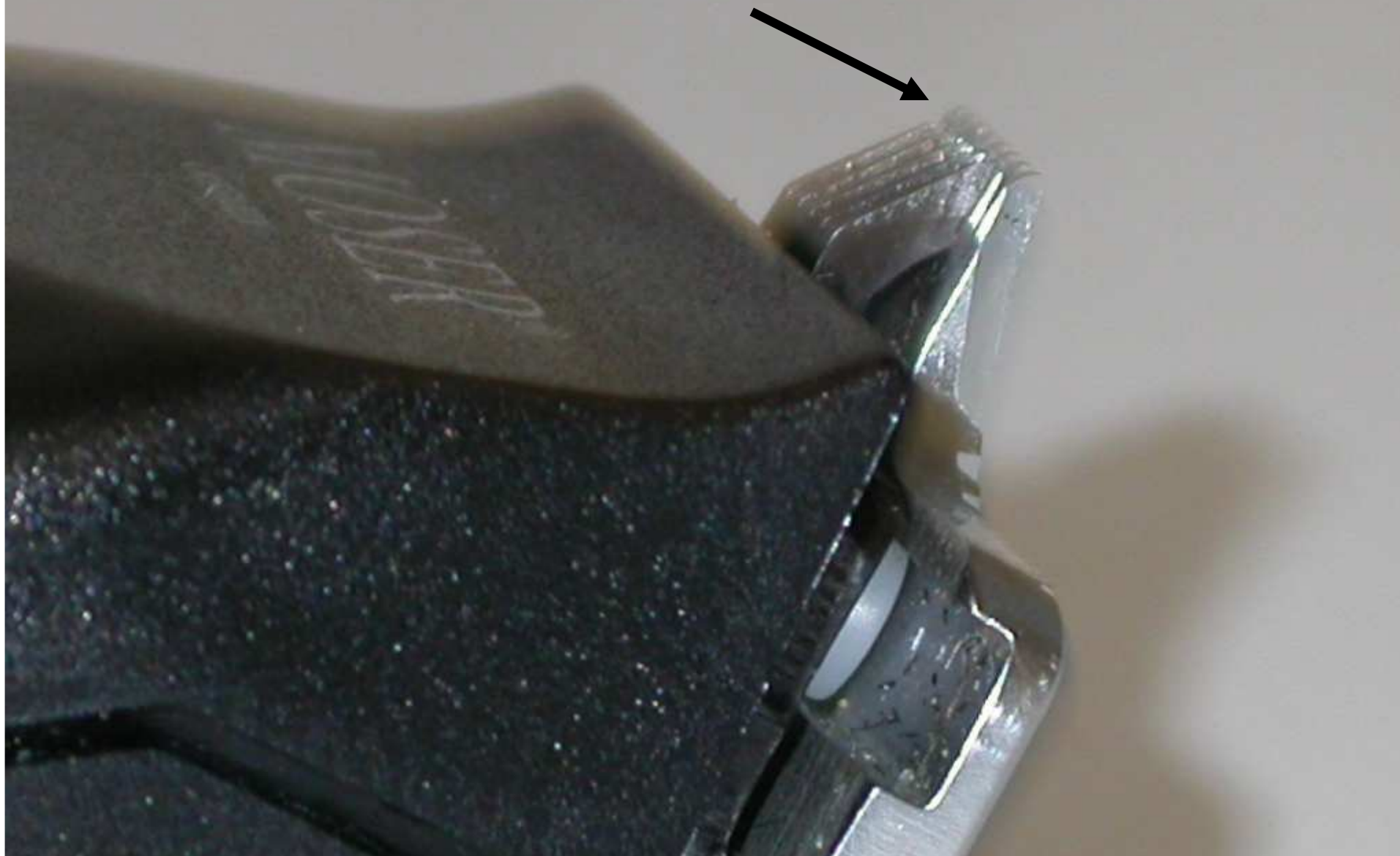
Narrow shaving width !





Narrow shaving width !

Even after hard hair clipping, short hair stubbles will remain for analysis two days later !



Clip the hairs evenly and completely.

Clip against the growing angle of the hairs.

Make sure that all hairs are short and of even length.

A typical result is shown.



After hair clipping



Typical result after clipping. This is an image without hair dye



Use the hair dye (Goldwell topchic) and developer (6% creme oxid) in equal amounts.





Mix the two parts, until a homogeneous, greyish and soft mass has formed. This will take 1-2 minutes.

This dye has to be produced freshly for every patient.



Apply onto the clipped target area.

The dye has to be applied directly before the TrichoScan image.



The dye must remain for 12 - 15
minutes



Use cellulose wadding pads (such as ZEMUKO) and KODAN-spray and remove the dye very carefully.

Take care that no dye remnants remain on the scalp.

Often the scalp has to be rubbed firmly with spray and ZEMUKO to remove all hair dye.





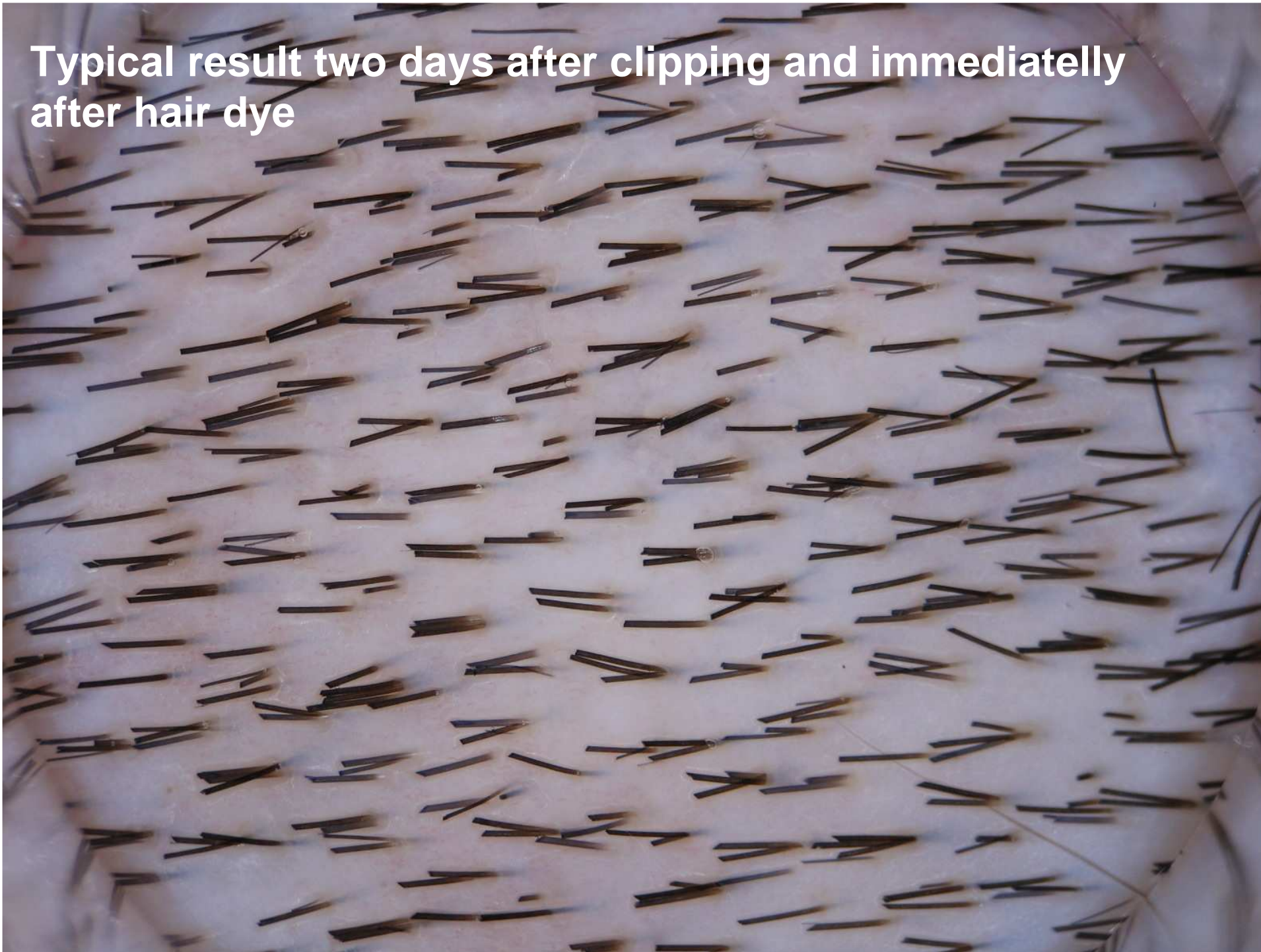
Once the area is clean, spray on again and make the target area very wet with KODAN.

Apply the optics with some pressure and be sure that you make images without any air bubbles.

Typical images are shown.



Typical result two days after clipping and immediately after hair dye



Typical result two days after clipping and
immediatelly after hair dye



**Typical result two days after clipping and
immediatelly after hair dye**

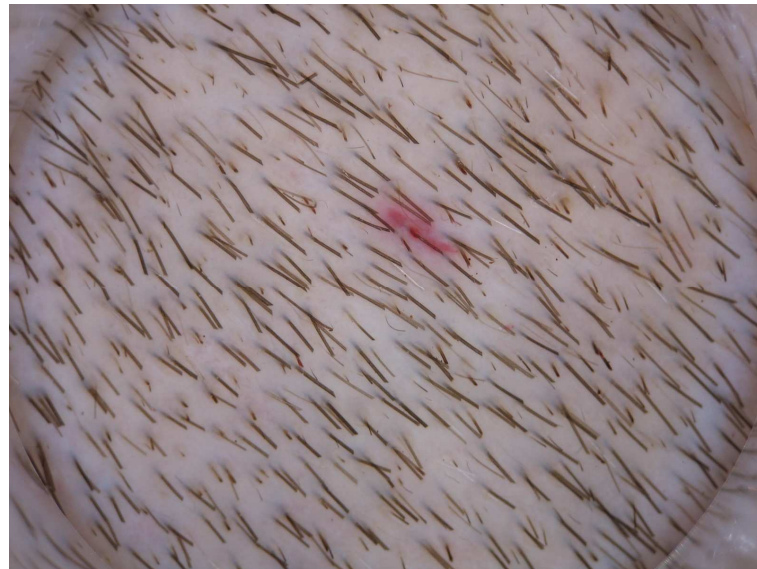


For very precise results the same area must be analysed at follow-up visits.

This can be ensured with a little tattoo.
Please watch our little video how tattooing is performed.

Ideally the tattoo should be in the center of the image of each visit.

Typical results directly after clipping showing the tattoo in the center of the image



In case you wish to tattoo the TrichoScan target site, always perform the tattooing in advance or after the baseline visit.

This approach ensures that the skin damage due to tattooing has healed.

We use any bright red commercial tattoo ink and use 20G sterile injection needles to puncture the skin.



TrichoScan

.....making hair growth measurable