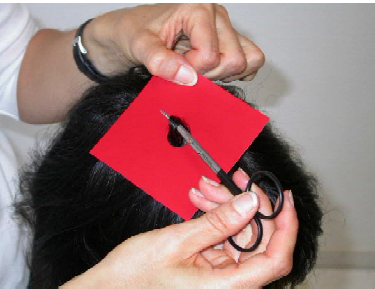




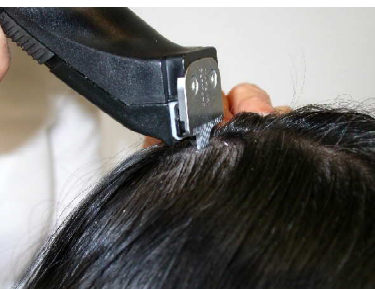
A measurement site within an area in a transitional stage between alopecia and normally growing hair is chosen. The mask is applied.



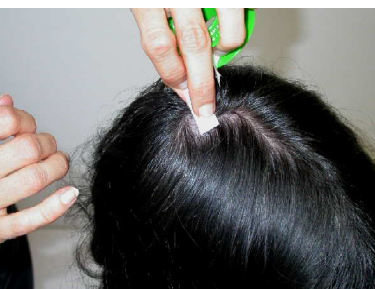
After pulling the hair through the mask, it is cut using scissors.



The shortened hair is clipped to a defined length. For this purpose, the clipper must be used in a 90° angle. We recommend some training before taking "real" images. As the TrichoScan defines a hair which is longer than thick, to short hair stubbles will not be counted.



You have to clip the hair with the hair clipper in a 90° angle as shown in this image.



After hair clipping it is important to clean the area with a sticky tab to remove all clipped hair stubbles.



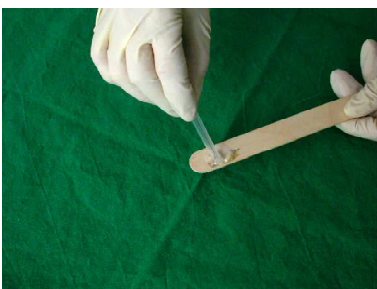
Approx. 0,5 cm of hair dye is applied to a wooden spatula or any other suitable instrument.



The same quantity of developer (creme oxid; 1:1 mixture) is added to the hair dye.



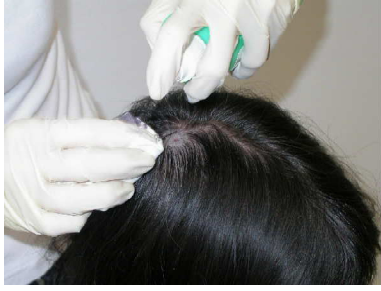
The dye and developer must be mixed thoroughly.



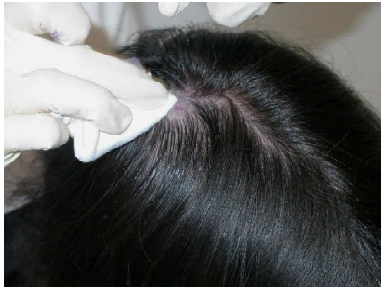
The dye is ready to use when it has a creamy, gray appearance.



The mixture is spread onto the measurement site using the spatula and allowed to remain there for 15 min.



The measurement site is then thoroughly cleansed using an alcohol solution (e.g. Kodan Spray). The area must be entirely clean, otherwise some hair dye remnants will produce artefacts.



With a soft swab the hair dye must be removed completely. We recommend to control this procedure with a digital image made with the TrichoScan.



The epiluminescence light microscope is then pressed onto the entirely clean and wet measurement site and an image of the scalp is taken.

In order to avoid air bubbles, it is very important to wet the measurement site and to apply the optics with some pressure.

Furthermore, any hairs which cross the measurement site from the outside will be erroneously counted. This has to be avoided.

You may perform three types of measurements:

1. directly after clipping (hair density)
2. hair dye and analysis two days after clipping (this will allow to analyse non-growing hairs [telogen, catagen and exogen hairs])
3. in case you use a normal hair clipper and shave the measurement site completely, that no hair stubbles are present, then you may analyse only anagen hairs if the image is taken three days after hair clipping. This procedure will result in smaller hair counts due to the fact that non-growing hairs will not be counted.