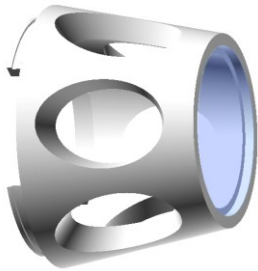


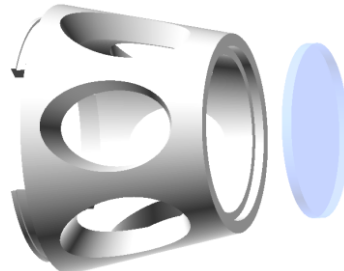
Camera Attachment with Contact Disc for Dino-Lite Edge

A camera attachment was specially developed for the requirements of TrichoScan. This is a consumable item that can be reordered at short notice if needed.

The contact disc is made of glass and is press-fitted into a plastic component.



Attachment ready for use



Attachment with glass pushed out

Cleaning Instructions

- Cleaning should only be performed by wipe disinfection
- Never spray disinfectant in the direction of the camera or directly into the camera
- Cleaning agent: alcohol-based disinfectant
- For more thorough cleaning, the glass disc can be pushed out of the plastic housing and then pressed back in. The glass must not be touched directly; it should be placed on a flat surface. Reassembly is successful when the glass and plastic component are flush— the glass must not protrude.
- Pushing out the glass stresses the plastic holder and should therefore be done as rarely as possible.

If the glass shows any defect or crack, the attachment must no longer be used.

Assembly

The camera has a simple bayonet mount. To attach the adapter, place it in the correct position on the camera's acrylic mount and fix it with a rotation of approx. 30°.